

JANUARY 2026

# LET'S TACO 'BOUT MISSION GIVE YE THEM TO EAT

A MISSIONARY NEWSLETTER FROM PASTOR PAT & KIM LEWIS

REV. PATRICK AND DEACONESS KIM LEWIS SERVE AS CO-DIRECTORS OF GIVE YE THEM TO EAT (GYTTE).  
GYTTE IS A PARTNERSHIP WITH THE METHODIST CHURCH OF MEXICO AND THE GENERAL BOARD OF GLOBAL MISSIONS.

What's inside this issue:

- LEARNING & SERVING
- HAVE YOU HERD THE GOOD NEWS?
- NEW YEAR, NEW WASHING MACHINE
- ESPERANZA SOBRE RUEDAS
- HOPE ON WHEELS
- OUR FIRST CHRISTMAS IN MEXICO
- REBUILDING HOPE
- STRONG LEADERS, STRONG TEAMS



## TOGETHER IN MEXICO

### LEARNING & SERVING

We are honored to serve as two of three Global Missionaries in Mexico—and with 190 missionaries worldwide. We are grateful to be the fourth missionary couple to serve with GYTTE. Before this season of service, we spent many years in ministry: Pat as an elder and Kim in nonprofit leadership serving vulnerable populations. Our journey has carried us through multiple seasons of learning, transformation, and yes—plenty of moving (we've served in four states!)—all grounded in God's call to love and serve.

We've had the privilege of sitting with voices from every corner of the world—people whose stories we never expected to hear, whose struggles we could hardly imagine, and whose hearts have left a lasting imprint on our own. From busy cities to quiet villages, from moments of laughter to moments of tears, every conversation has shaped our calling as missionaries. These experiences remind us why we serve: not to fix, not to rescue, but to walk alongside—to listen, to love, and to reflect the heart of Jesus in a world that desperately needs hope.

These conversations are not just moments; they are God's fingerprints on our hearts, shaping both our calling and our faith. Missionaries like us play a vital role in connecting the church everywhere for mission everywhere, inviting people to participate in God's holistic plan to redeem all of creation. This work is only possible through the prayers, generosity, and faithfulness of partners who walk alongside us.

If you feel led to partner with us, **we invite you to support this ministry by making a donation to our Advance or by entering into a Covenant partnership with us.**

This year, we are prayerfully seeking to add **five new covenant partnerships**. Thank you for the prayers and partnerships that continue to sustain us and the work of GYTTE as we learn and serve together in Mexico.

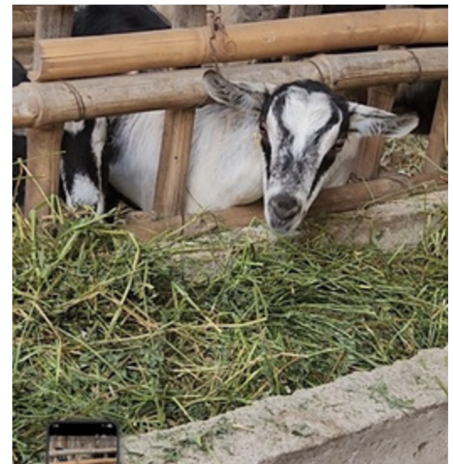
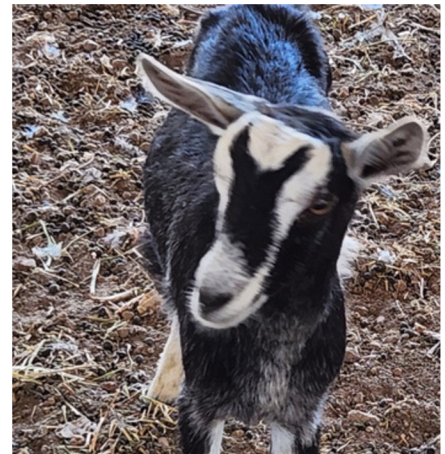
# HAVE YOU *HERD* THE GOOD NEWS?

## PALABRAS WITH THE CABRAS

GYTTE is excited to announce our first goat sponsor of 2026—and it's helping us grow our herd in a big way! A heartfelt thank you to Montrose UMC for their generous gift of one male and five female goats. Because of you, families in Tlancualpican are one step closer to sustainable livelihoods and long-term hope.

Goat sponsorships are a powerful (and practical!) way to make an impact: \$225 sponsors a female goat and \$550 sponsors a male goat. And here's the truly amazing part: just one male and one female goat can transform a family's future. Goats provide milk, nutrition, income, and the ability to grow a herd over time—creating dignity, stability, and opportunity for families who need it most.

To continue growing our Livestock Development program for 2026, we need 39 more goats. So let's get GO-ating and help grow the herd—one goat, one family, and one life-changing step at a time!



# NEW YEAR, NEW WASHING MACHINE

A fresh year often brings fresh hopes—and sometimes very practical prayers! One item that has been sitting high on our wish list is a new washing machine, and we are so grateful to share that this need has been met.

A heartfelt thank you to Portland First UMC for your generous gift! Your support helps keep daily ministry moving forward in ways that may seem ordinary but are truly essential. Clean clothes, fresh linens, and dependable tools all help create a welcoming, healthy space for ministry to flourish at the ranch.

We're reminded that God often provides through the faithfulness of others, meeting needs both big and small. As Scripture tells us, "Give, and it will be given to you" (Luke 6:38). This gift is a beautiful reminder that every act of generosity—yes, even a washing machine!—can be part of God's greater work.

We step into this new year grateful, encouraged, and ready to serve—one load of laundry at a time.

P.S. We're also hoping to add another washing machine at the Puebla office to support our medical students on scholarships, community health promoters, and visiting mission teams. With so many hands serving and learning together, this practical resource would be a tremendous blessing. If you're interested in helping with this need, let us know!



**BLAST FROM THE PAST:** *"I recall the days when there was no machine at all and the laundry for Teams was done on the washboard sink...and before the training center was built, they washed clothes on the rocks in the river."*

*~Marian Hartman, 25-year AWARE Team member*

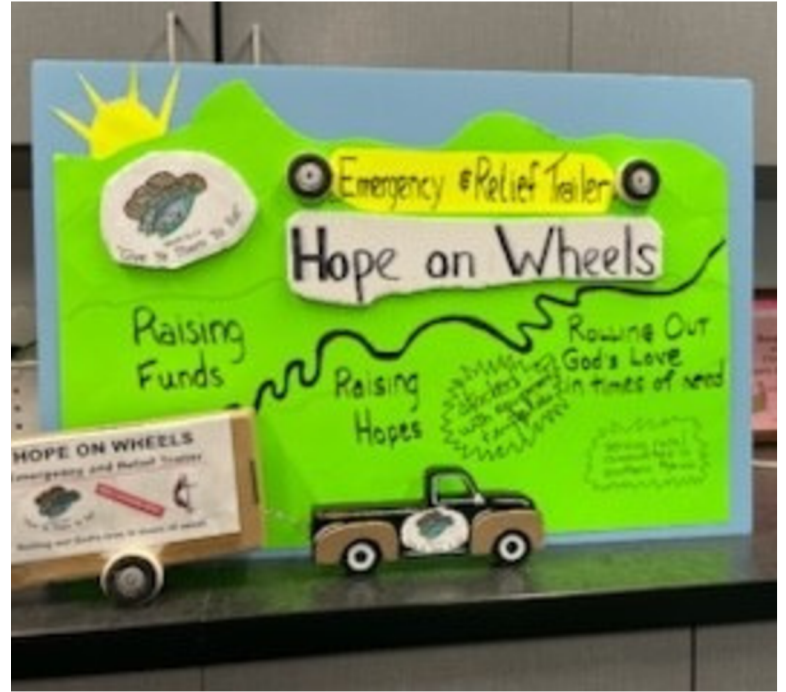


# ESPERANZA SOBRE RUEDAS

## HOPE ON WHEELS IS BECOMING A REALITY!

Hope on Wheels is moving from vision to reality—and we are deeply grateful for the partners helping make it possible. A heartfelt thank you to First UMC DeKalb for “rolling God’s love in times of need.” Their congregation has committed the first quarter of 2026 to fundraising efforts in support of GYTTE’s disaster response and resource trailer. We are also thankful for additional donors who have stepped forward to support this project—thank you, Robin, Fred, and Terry for your generosity and prayers.

This trailer is not intended to replace or duplicate the support that an UMCOR grant can provide during a disaster. Instead, Hope on Wheels will be available year-round, ready to respond to the many disasters and crises that occur across the state of Puebla. It will directly support our mission of “More Than a Bandage” by equipping and strengthening the work of our community health promoters.



The Hope on Wheels emergency, relief, and resource trailer will be a vital tool for ministry. It will house a portable generator to provide power for tools and refrigeration during emergency outreach, as well as carry rescue supplies, tools, and relief equipment to communities affected by disaster. Beyond emergency response, the trailer will also transport supplies to support medical mission teams and community health promoters community education programs.

The total cost of this project is approximately \$15,000, and we invite you and your congregation to prayerfully consider a donation toward making Hope on Wheels fully operational. This trailer will be a powerful, practical resource—bringing help, hope, and healing wherever the need arises.

## OUR FIRST CHRISTMAS IN MEXICO

Christmas in Mexico was beautifully different. It also marked our first six months of service in our new community. While we loved experiencing the season through another culture, the biggest difference this year was being away from our family, which felt unfamiliar. Still, Puebla wrapped us in celebration as we honored the coming of Christ—observing the twelve days of Christmas and culminating with Día de los Reyes (Three Kings Day). Even when traditions change, the heart of the Christmas story remains the same.

One of the highlights of the season was the GYTTE Christmas party. The celebration wasn’t just for our 11 employees, but also included their spouses and families—meaning 35 of us enjoyed a blend of Christmas fun, culture, and community. (We celebrated for six hours, something we’re definitely not used to in the U.S.!) The food was prepared by our co-workers, who are truly incredible cooks. We joked that they should start a YouTube channel featuring their recipes—seriously, better than any five-star restaurant!

We also attended our first Mexican Methodist potluck, and let’s just say—yum. Loaves and fishes have nothing on this crowd! It easily ranks among our favorite gastronomical feasts in Puebla. We were also welcomed into a co-worker’s home for a traditional Mexican Christmas Eve dinner. Celebrating with them was a meaningful reminder that even far from home, we are surrounded by community and welcomed as family.



# REBUILDING HOPE



## STRONG LEADERS, STRONGER TEAMS

Every successful mission team begins with a well-prepared leader. UVMIM continues to emphasize the importance of having a trained team leader, and a virtual Team Leader Training is coming up this February.

This training is an excellent opportunity for GYTTE mission teams to strengthen their leadership, deepen their understanding of mission, and ensure teams are prepared to serve well and responsibly. We encourage covenant churches and teams currently on the schedule—or considering future involvement—to take advantage of this training.

**UVMIM Team Leader Training**

Join the Jurisdiction Coordinators on Zoom for Team Leader Training!

Tuesdays, February 3, 10, 17, 24  
7:00-8:30 Eastern/6:00-7:30 Central  
5:00-6:30 Mountain/4:00-5:30 Pacific

Registration

## HOW YOU CAN HELP:

We invite your prayers, support, and presence. Give! Collect items from the Wish List! Enter into a Covenant Relationship! Send a Mission Team! Pray! Share our Story! Read our blog: <https://frommoletoministry.blogspot.com>. Let us know you how would like to get involved: [kewis@umcmmission.org](mailto:kewis@umcmmission.org) or [plewis@umcmmission.org](mailto:plewis@umcmmission.org).

One project has occupied the GYTTE team's hearts over the past month: how do you rebuild from the rubble of the past? In this case, the rubble is what remains of a simple, damaged home on the side of a hill—lost during the 2017 earthquake, when half of the structure literally fell off the mountain. For eight years, one family has held onto hope, trusting that one day they would again have a safe place to call home.

Many people rarely consider their homes in terms of livability. A home is often a place to walk into, set things down, and rest in comfort. In Tlancualpican, however, this is not always the case. Families live under tarps, cook in kitchens made from metal drums, sleep on floors with blankets, and create living spaces defined by corrugated siding. Here, homes are often held together by prayer, perseverance, and family.

In response to this reality, GYTTE's Community Development project for early 2026 will construct a cob-style home for Frederico and his family. This project will mark GYTTE's first two-story construction, with a total cost of nearly \$7,000 USD. (We are still seeking financial support to fund Frederico's home!)

Frederico is a humble, hardworking man, married with three beautiful children. Their current home sits on a steep hillside, nestled between the homes of his parents and brother. The family does not have running water or electricity of their own. Frederico's sister shares power by running an extension cord, and at times his parents run a hose to provide water to wash dishes and bathe. Drinking water must be carried nearly a kilometer uphill on foot.

The new home will include a dry composting toilet and a low wood-burning stove, both of which will be tremendous blessings for the family. Frederico's employer, Angelo, is also supporting the project by providing some building supplies and volunteer labor. Later this month, a mission team from Belmont UMC will assist with constructing the walls and the second story of the home.

When Frederico speaks about the new home, his face lights up. The second-story loft will be dedicated to the children, and for the very first time, each child will have their own bed. When Frederico learned that his housing application had been accepted, he said through tears, "Dios no se olvida de nosotros"—"God has not forgotten us."

This story is not one of judgment or pity for a family with so little. Instead, it is a testimony to the strength of community, the depth of love shared among neighbors, and the fortitude required to thrive in a space few could endure. It is a shared dream—one that includes the family, community members, staff, volunteers, and donors—whose lives are being changed through this work.



GYTTE focuses on six key areas : Community, Agricultural, and Livestock Development; Community and Family Health; Church and Faith Development; and the A.W.A.R.E. Program (Alternative Work-study And Reality Experience). More information can be found on [Facebook](#) and [GYTTE.org](#). You are invited to donate to the ongoing programs of GYTTE through GBGM [Advance No. 7629A](#).